

• **Phase 1 Trial**

- **Pond:** 60m x 40m x 1.5m
- **Crop:** *Litopenaeus vannamei* “White Leg Shrimp”
- **Location:** Chang Mo Village, Panyu District, Guangzhou City, Guangdong Province, China
- **Water Source:** Pearl River Delta Water Table (brackish)
- **Duration:** 3½ months (Apr - Aug) 2017
- **Seeding:** Post larval shrimp

Experimental: 34 /m<sup>2</sup> (~100,000), Control: 19/m<sup>2</sup> (~56,000)

- **Equipment:**

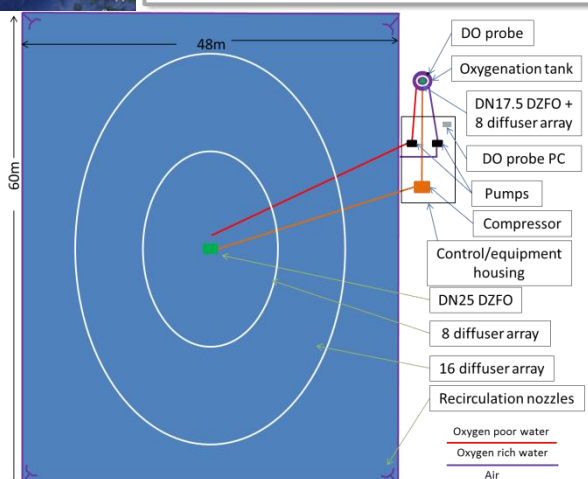
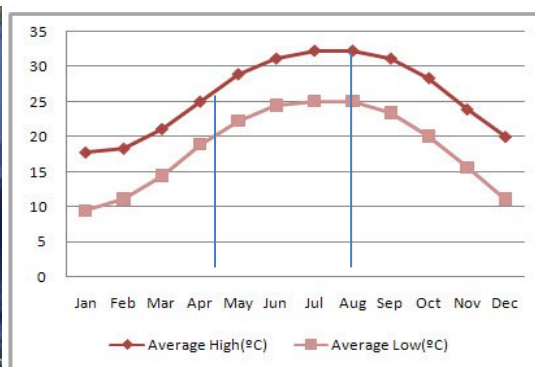
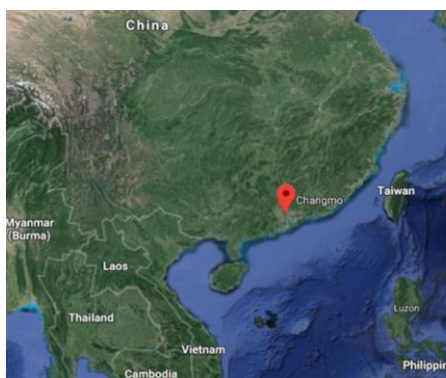
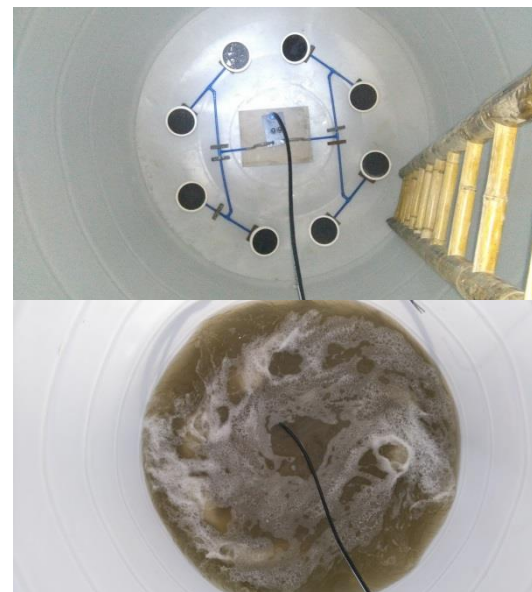
Experimental: 1 x DN17.5 DZFO, 1 x DN25 DZFO, air compressor, pumped recirculation, 32 x 9” EPDM diffusers, DO measurement

Control: 1 x paddle wheel, 1 x surface aerator

- **Result:**

Control = 600kg (taste of mud)

Oscillator = 1000kg (taste of prawn)



**Michael Hines, PhD**  
[michael@perlemax.com](mailto:michael@perlemax.com)  
 +447722091358  
 Kroto Innovation Centre  
 318 Broad Lane  
 Sheffield  
 S3 7HQ

Registered in England and Wales  
 Company Number 07369873  
 VAT Number 109 9413 07